

JENNY OAKS BAKER

*Logo Usage
with America's
Violinist*

For most applications, the primary lockup should be used.



JENNY OAKS BAKER

AMERICA'S VIOLINIST™

Primary Lockup Gold & Black

It has been provided in various color combinations:



JENNY OAKS BAKER

AMERICA'S VIOLINIST™

Primary Lockup Black



JENNY OAKS BAKER

AMERICA'S VIOLINIST™

Primary Lockup White

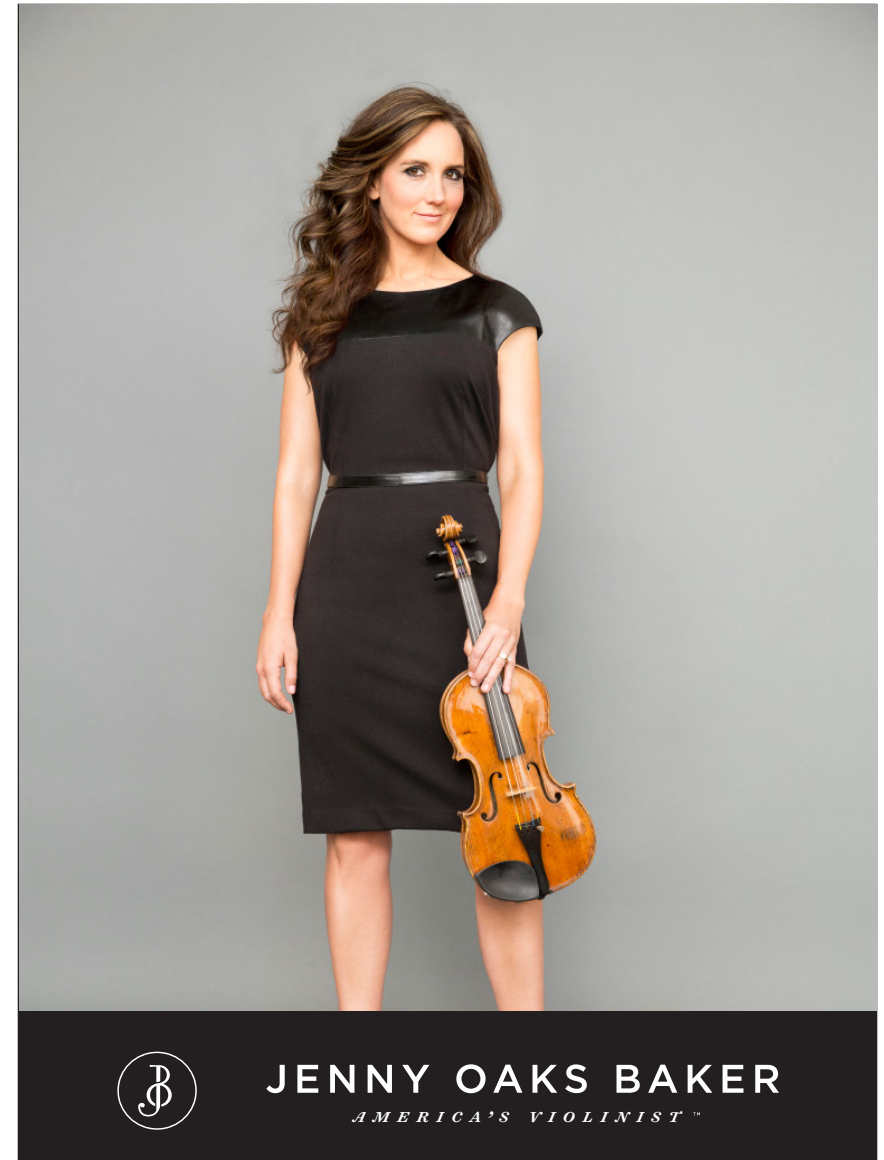


JENNY OAKS BAKER

AMERICA'S VIOLINIST™

Primary Lockup Grey

The primary lockup can be used with photography, but should be given generous white or black space at the bottom or top of the image. *See examples:*



Avoid placing the primary lockup over images unless the negative space does not interfere with the image. In most cases, this will mean using the white or black lockups to make the focus on Jenny Oaks Baker.





JENNY OAKS BAKER

AMERICA'S VIOLINIST™

Use the primary lockup. **Do not** combine the lockup with other typefaces or fonts:



Jenny Oaks Baker



Jenny Oaks Baker



Jenny Oaks Baker



Jenny Oaks Baker

Do not change the size of the type in relationship to the monogram:



JENNY OAKS BAKER

Do not make the thin or widen the primary lockup:



JENNY OAKS BAKER



JENNY OAKS BAKER



JENNY OAKS BAKER

AMERICA'S VIOLINIST™

The general lockup with trademark displays best at sizes larger than 6 inches wide



JENNY OAKS BAKER

AMERICA'S VIOLINIST™



JENNY OAKS BAKER

Do not use the lockup with the trademark smaller than 3 inches wide

For small use, the general lockup is preferred.

JENNY OAKS BAKER

For even smaller use, use the name only (no logo).

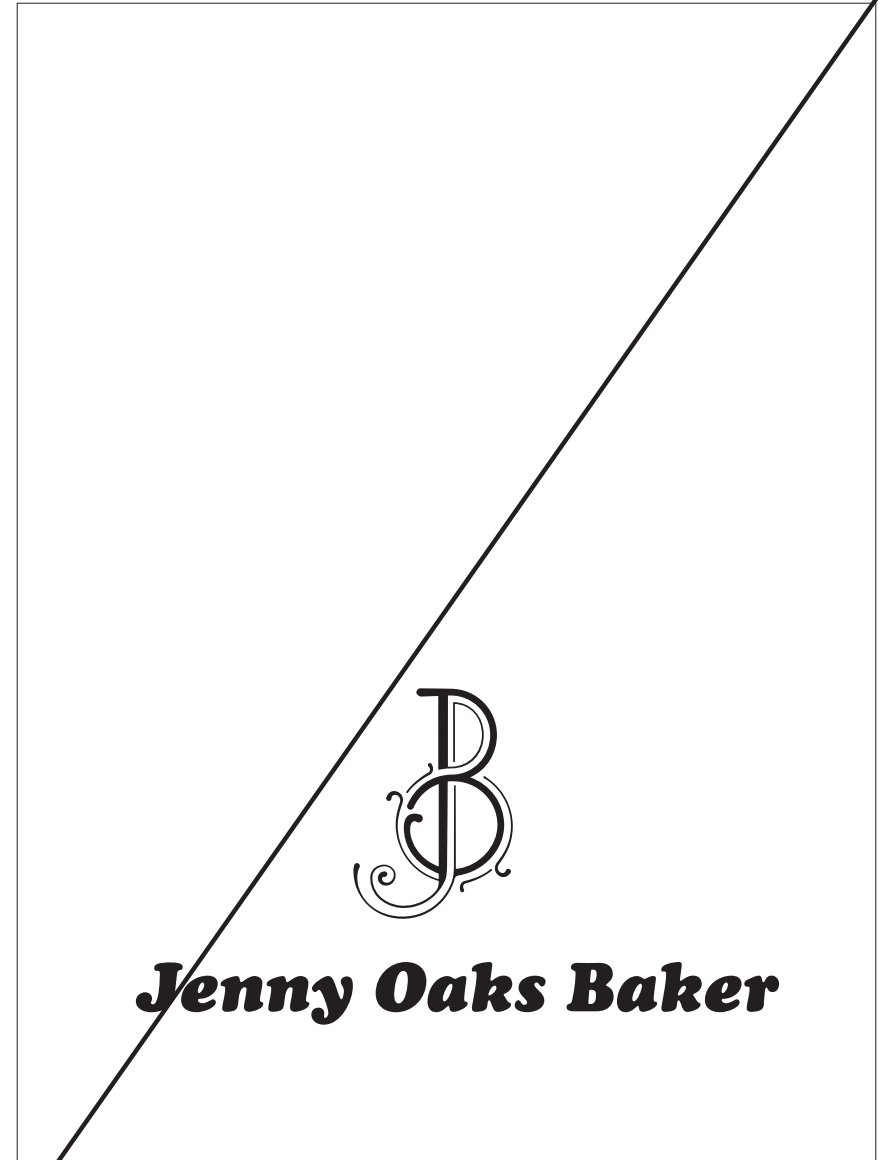
If given enough negative space, the display lockup can be used.

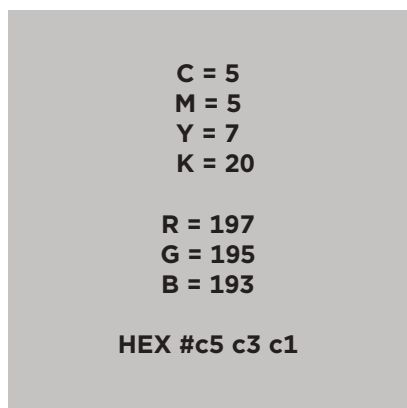


JENNY OAKS BAKER
AMERICA'S VIOLINIST™

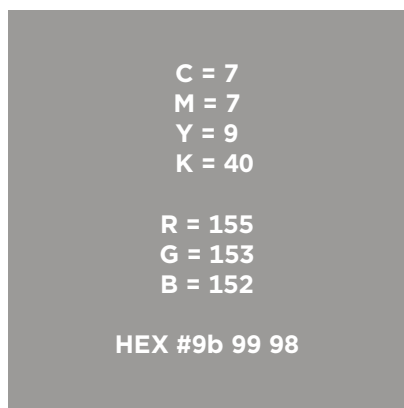


Do not overlap with images. Do not combine with any other typefaces.

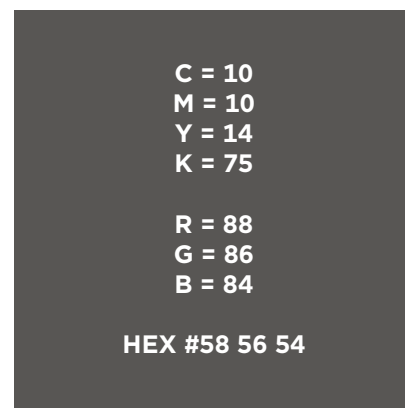




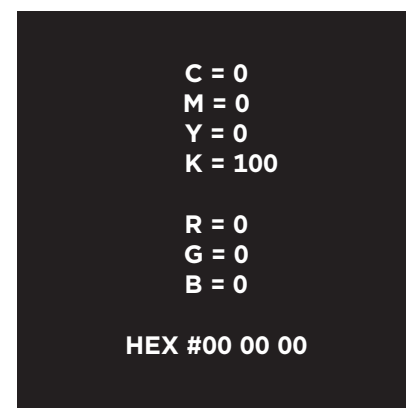
Light Warm Grey



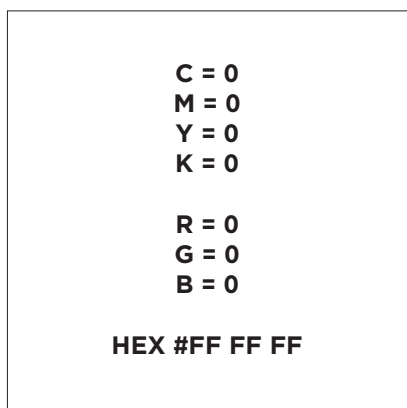
Medium Warm Grey



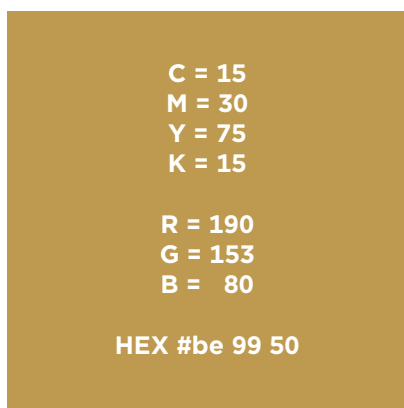
Dark Warm Grey



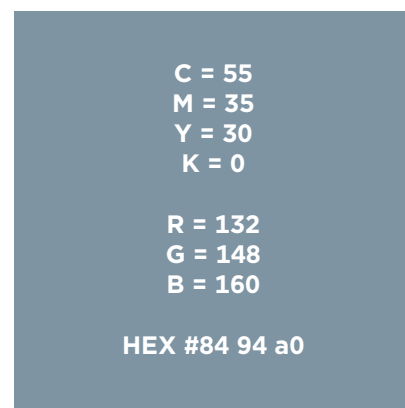
Black



White



Gold



Silver